

A scenic landscape featuring rolling green hills under a clear blue sky. In the middle ground, a small village with yellow buildings and a church spire is nestled among tall cypress trees. The foreground is dominated by a body of water, likely a lake or a wide river, with a dense bank of tall, golden-brown reeds. The overall atmosphere is peaceful and rural.

*Le Colombaie*





Immerso nel bellissimo paesaggio toscano, il complesso residenziale **"Le Colombaie"**, a soli 10 minuti dal mare di Castiglioncello, offre una bellissima vista sull'attiguo **lago di Santa Luce** (PI), oasi naturale LIPU.

I fabbricati sono stati completamente restaurati e trasformati in un complesso ricettivo comprendente **3 alloggi** e locali **reception** e accessori al PT, nel primo edificio (Blocco A) e **4 alloggi** nel secondo edificio (Blocco B).

Gli alloggi sono attualmente arredati e in **stile toscano**, rustico e confortevole, abbinato a finiture tipiche con pavimenti in cotto e soffitti in travi e travicelli in legno. Il complesso è dotato di **piscina** dim. 12 x 6 + 4 x 4 m ed ampio **parkeggio** e vaste aree a verde.

Una comoda strada conduce al borgo di Santa Luce, bellissima località medioevale distante circa 4 Km, ove è possibile trovare negozi ed attività artigianali. Possibilità di escursioni nei più importanti **centri storici toscani** e nella vicina zona boscata, con **percorsi escursionistici** segnalati (tipica macchia mediterranea).



The holiday residence **"Le Colombaie"** is embedded in the wonderful typical Tuscan landscape along the Etruscan Coast between Leghorn and San Vincenzo. It offers an amazing view on the nearby **lake of Santa Luce**, a nature oasis of the Italian Bird Protection Organization LIPU. This lake, once an artificial water reservoir has in time developed to an important Bird Life Sanctuary.

The restored building has been divided into **3 flats** with **reception** and warehouses rooms (Block A) and **4 appartements** at the ground floor (Block B). The units are spacious, comfortable and well equipped.

The flats are furnished in **typical Tuscan rustic style** with beautiful cotto floors and wooden ceilings. The ensemble has a **swimming pool** 12 x 6 m + 4 x 4 m, **large parking facilities** and a wide surrounding **garden** area form part of this outstanding property.

A well kept street takes you to the medieval village of Santa Luce (4 km away) where you can find shops. Famous **Tuscan centres** are within easy reach. The tourist office of Santa Luce invites you to **guided tours** (trekking, donkey riding, mountain biking) leading into the unique Mediterranean Macchia environment.

*Le Colombaie*

*Le Colombaie*



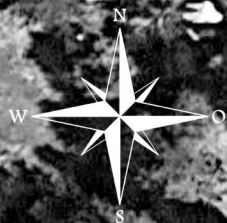
**+ 1 ha** di terreno  
agricolo a seminativo  
prospiciente

of overlooking  
agricultural land

blocco\_B

blocco\_A

piscina



*Le Colombaie*

**2500 m<sup>2</sup>** di area pertinenziale scoperta  
outdoor appurtenant area



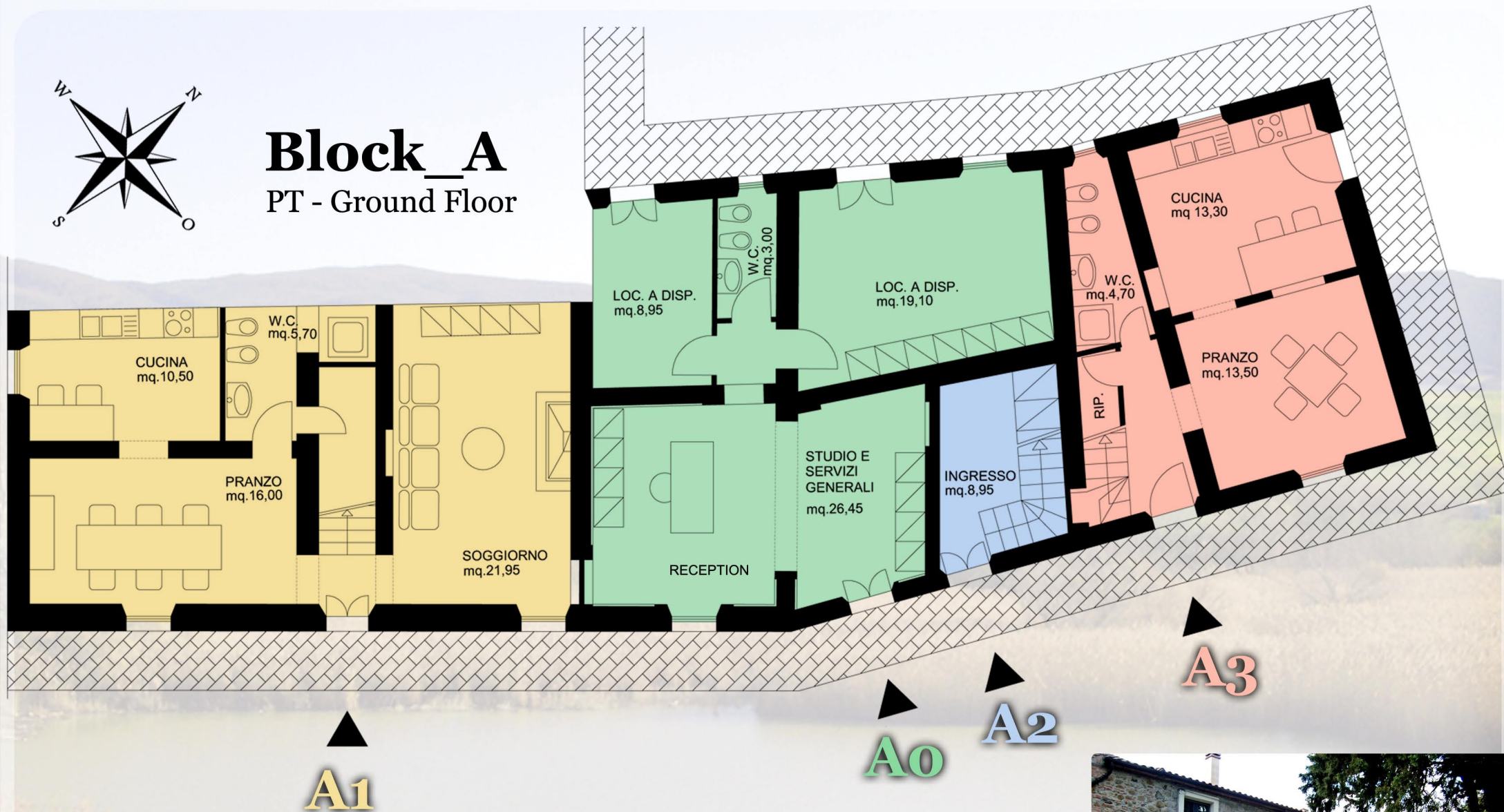
**Piscina** 2 vasche  
Swimming Pool **12 x 6 m**  
+ pool for children **4 x 4 m**





# Block\_A

PT - Ground Floor



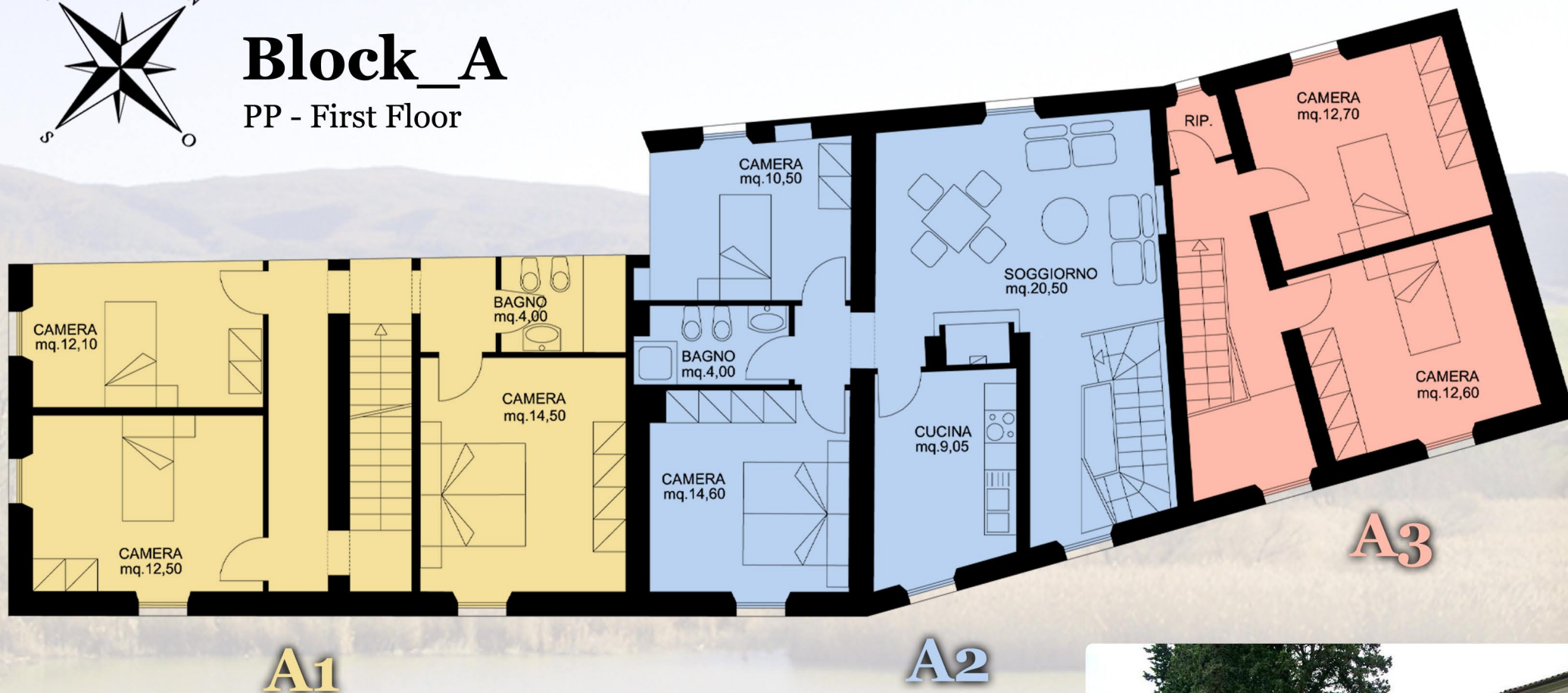
*Le Colombaie*





# Block\_A

PP - First Floor



Vista del blocco\_A - View of Block\_A

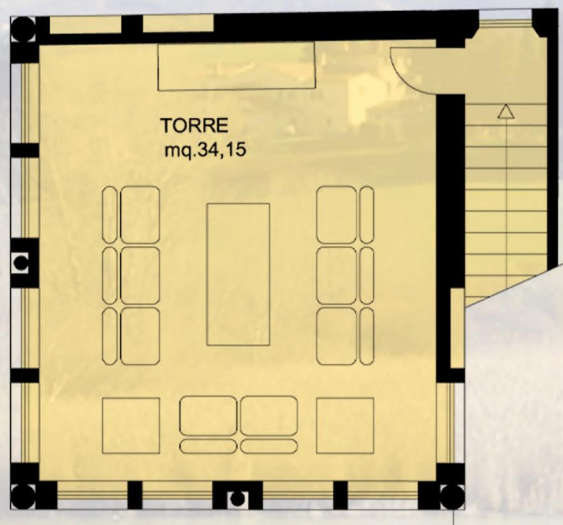
*Le Colombaie*





# Block\_A

PS - Second Floor  
*il Torrino - The Little Tower*



A1

*Le Colombaie*









Il Torrino - The Little Tower



Il soggiorno con camino  
The living room with fireplace

## Apartment\_A1

 L'unità immobiliare si sviluppa su tre livelli. Gli interni sono pavimentati in cotto con solai in legno e mezzane. Nel soggiorno è presente un grande camino. Dalla torre si può godere della vista sul lago. Il riscaldamento è autonomo (caldaia a GPL).

 The apartment consists of three levels. The flat is furnished in typical Tuscan rustic style with beautiful cotto floors and wooden ceilings. The living room has a large fireplace. From the tower you can enjoy the view of the lake. Independent heating (boiler LPG).



Camera da letto  
Bedroom



La sala da pranzo  
The dining room







A2\_Soggiorno - Dining room



A2\_Soggiorno - Dining room

## Apartments\_A2/A3

 Gli interni sono arredati e pavimentati in cotto in *stile Toscano*. Il solaio di copertura è in legno e mezzane. Nell'unità immobiliare A2 è presente il camino in soggiorno. Gli impianti di riscaldamento sono alimentati da caldaie autonome a GPL.

 The flat are furnished in typical Tuscan rustic style with beautiful cotto floors and wooden ceilings. The A2 living room has a fireplace. Independent heating (boiler LPG).

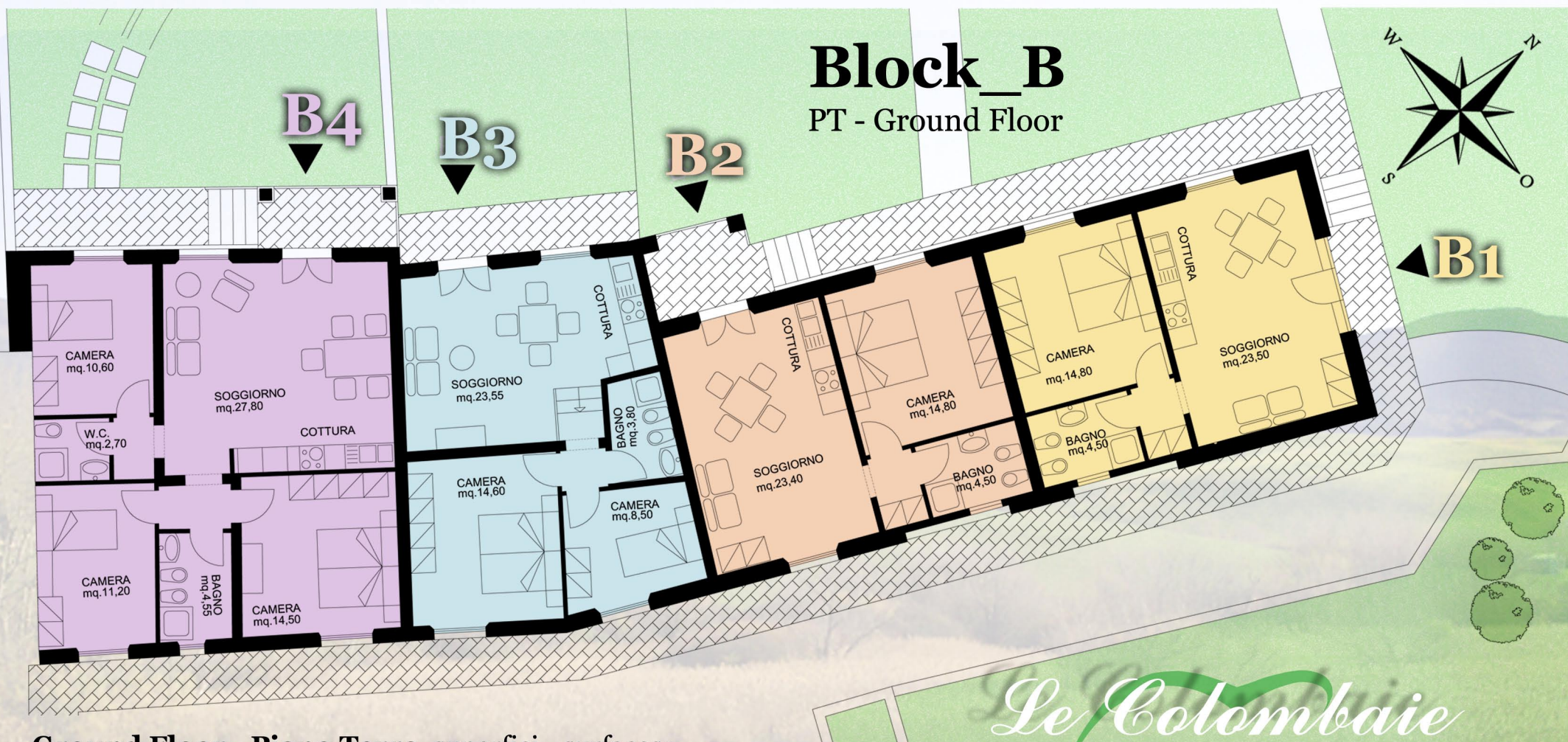


A2\_Camino - Fireplace



A3\_Cucina - Kitchen





**Ground Floor - Piano Terra, superfici - surfaces:**

**Apartment\_B1 :** 56 m<sup>2</sup>

**Apartment\_B2 :** 54 m<sup>2</sup>

**Apartment\_B3 :** 62 m<sup>2</sup>

**Apartment\_B4 :** 90 m<sup>2</sup>







B1 - Cucina, Soggiorno - Kitchen, Dining Room



B4- Soggiorno - Dining Room



B1 - Bagno - Bathroom

## Apartments B1/B2/B3/B4

Le quattro unità immobiliari sono arredate e rifinite in *stile Toscano con copertura in travi, travicelli e mezzane e pavimenti in cotto*, si sviluppano su un unico piano: ognuna è dotata di riscaldamento autonomo (caldaia a GPL) e gode di ingresso e spazio verde indipendenti.

Four flats are furnished in typical Tuscan rustic style with beautiful cotto floors and wooden ceilings. On a single floor, they have private entrances, gardens and heating (boilers LPG).





## **Block\_A**

**Apartment\_A1 :** PT\_ 78 m<sup>2</sup>  
PP\_ 79 m<sup>2</sup>  
(Torrino - Tower) PS \_ 44 m<sup>2</sup>

**Tot\_A1:** 201 m<sup>2</sup>

**Apartment\_A2 :** PT\_ 12 m<sup>2</sup>  
PP\_ 88 m<sup>2</sup>

**Tot\_A2:** 100 m<sup>2</sup>

**Apartment\_A3 :** PT\_ 53 m<sup>2</sup>  
PP\_ 52 m<sup>2</sup>

**Tot\_A3:** 105 m<sup>2</sup>

**Apartment\_Ao :** 75 m<sup>2</sup>  
(ufficio, reception, magazzino - office, reception, warehouse)

**Tot. Block\_A:** 481 m<sup>2</sup>

## **Block\_B**

**Apartment\_B1 :** 56m<sup>2</sup>  
**Apartment\_B2 :** 54 m<sup>2</sup>  
**Apartment\_B3 :** 62 m<sup>2</sup>  
**Apartment\_B4 :** 90 m<sup>2</sup>

**Tot. Block\_B:** 262 m<sup>2</sup>

**TOT. A + B :** 743 m<sup>2</sup>

**+ Piscina - Swimming Pool\_\_\_\_\_12 x 6 m + 4 x 4 m**

**+ Area pertinenziale scoperta**

**Outdoor appurtenant area\_\_\_\_\_2.500 m<sup>2</sup>**

**+ Terreno Agricolo**

**Agricultural land\_\_\_\_\_1 ha (10.000 m<sup>2</sup>)**

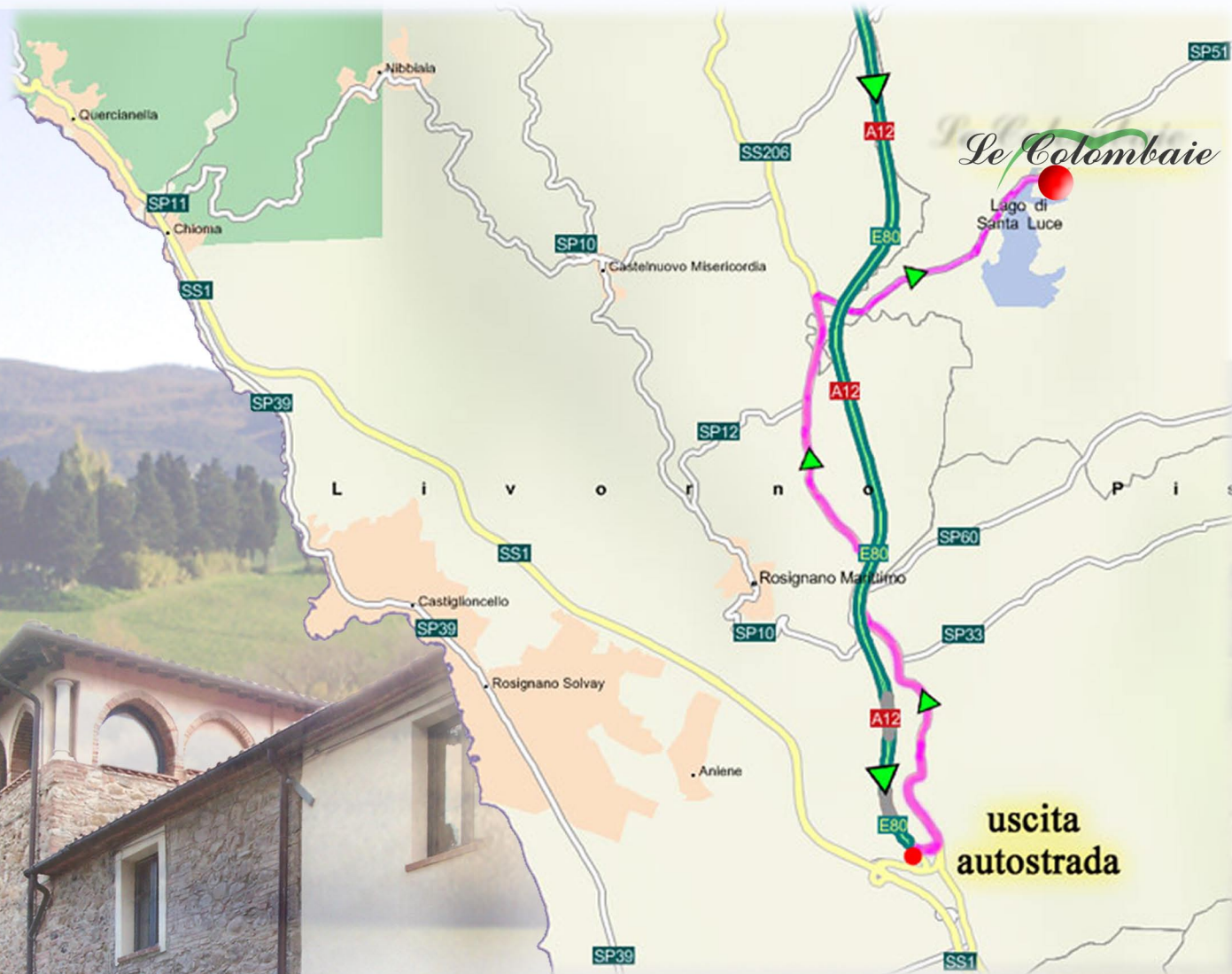
**Prezzo - Price:** *trattativa riservata - reserved negotiation*



# Le Colombaie

## Posizione - Location

- Santa Luce 4.5 km; Castiglioncello 13 km;
- Pisa (aeroporto - airport) 40 km;
- Volterra 60 km; San Gimignano 70 km;
- Firenze (Florence) 100 km; Siena 115 km



■ Provenendo dall'autostrada A12 Genova - Rosignano uscire alla fine della stessa, prendere verso nord la strada statale SS206 e, dopo circa 5 Km, imboccare il bivio a destra per Santa Luce.

■ Approaching from A12 highway from Genova you exit at Rosignano Marittimo and turn left into SS206 northbound to Pisa. After 5 km turn right to Santa Luce. After crossing the bridge over the lake you see "Le Colombaie" at your right hand side.





*Le Colombaie*

Via Rosignanina 49/56, Santa Luce (PI), Italy

[www.lecolombaie.net](http://www.lecolombaie.net)  
tecno4@tin.it

0587 730726 - 339 1345999