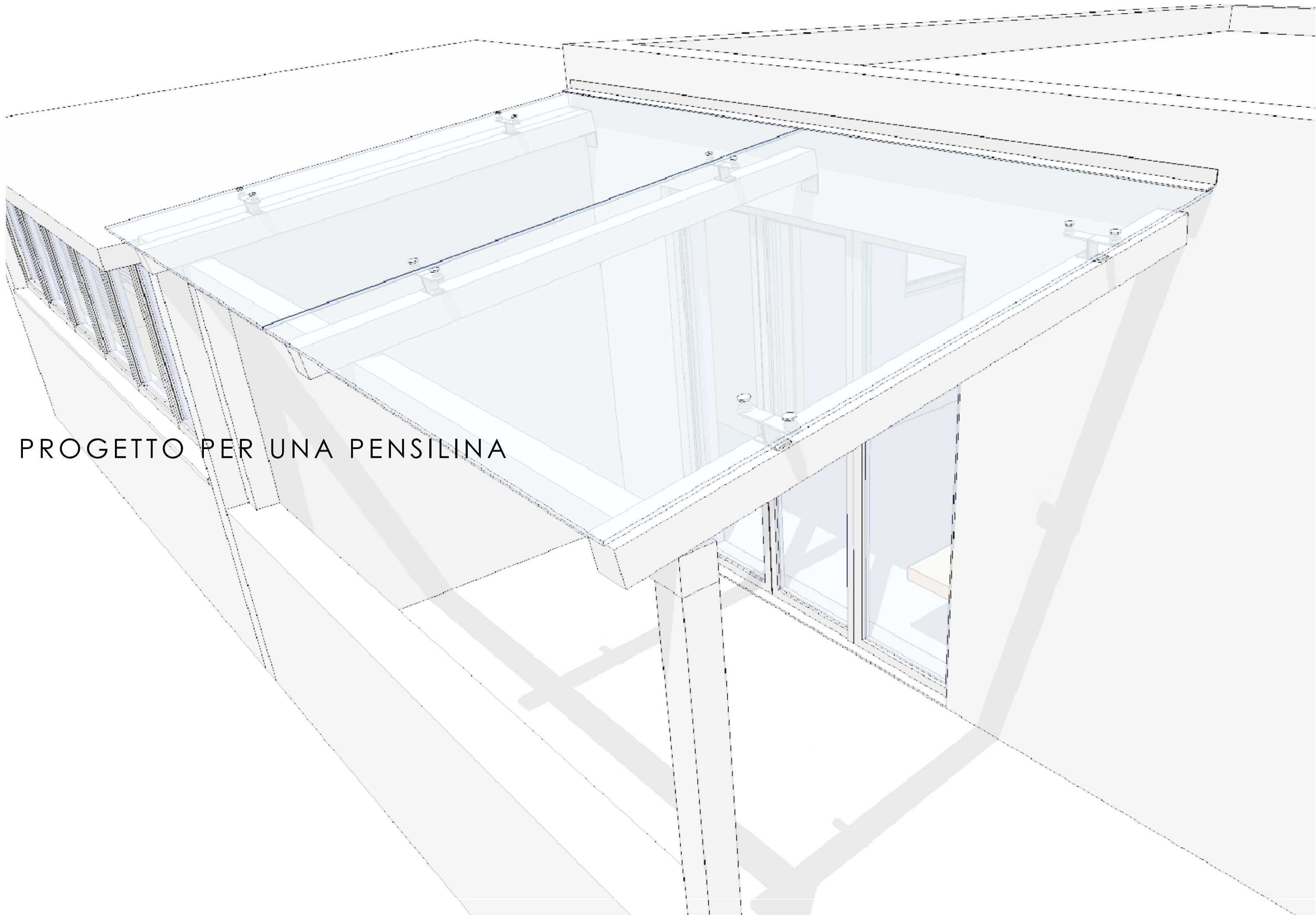



PROGETTO PER UNA PENSILINA

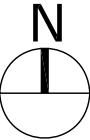
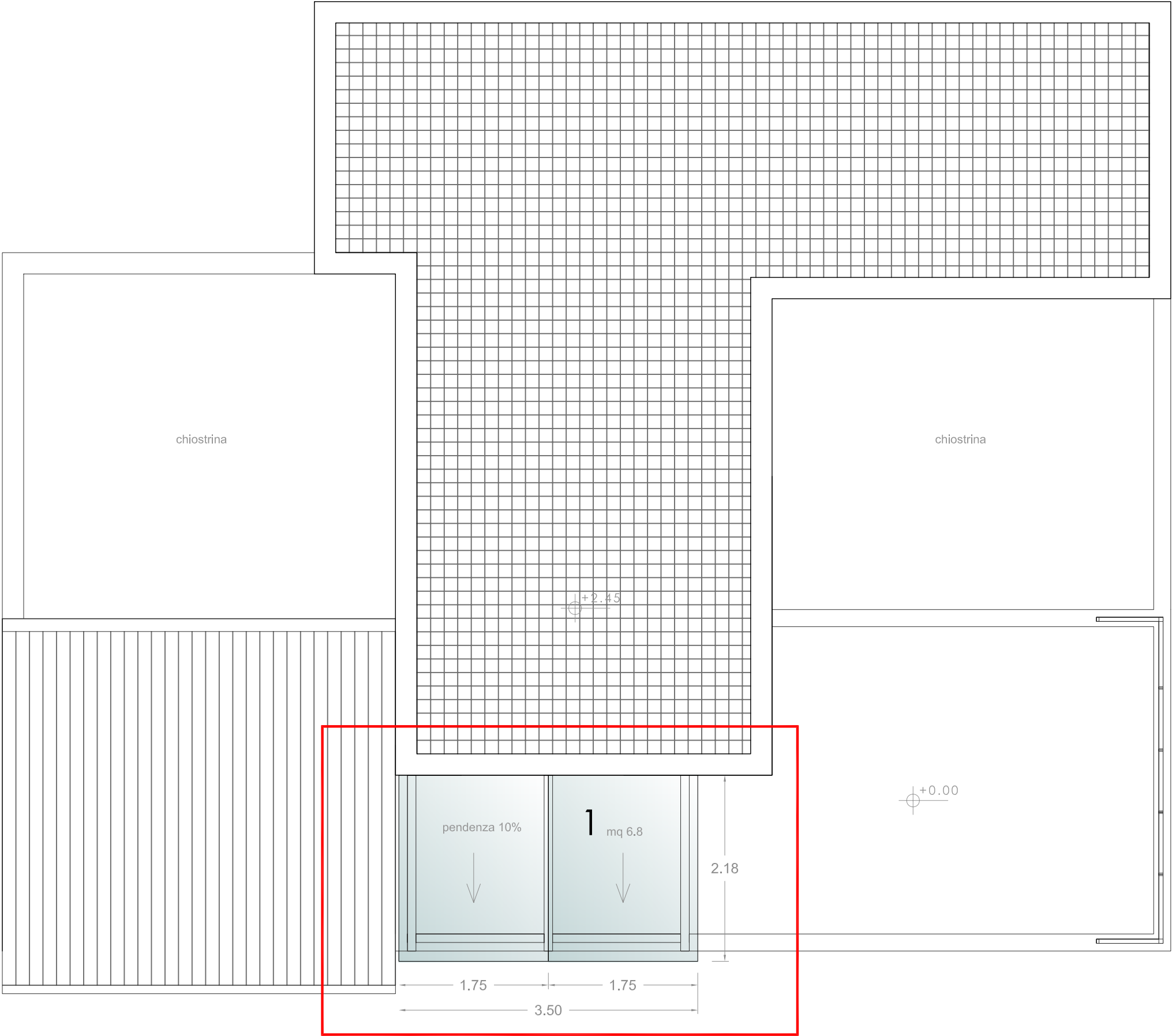


TAV A.1.0 - PROGETTO

PIANTA COPERTURE

AREA DI INTERVENTO

 Sup. 6.8 mq c.a.



SCALA 1:50

# TAV A.1.1 - PROGETTO A

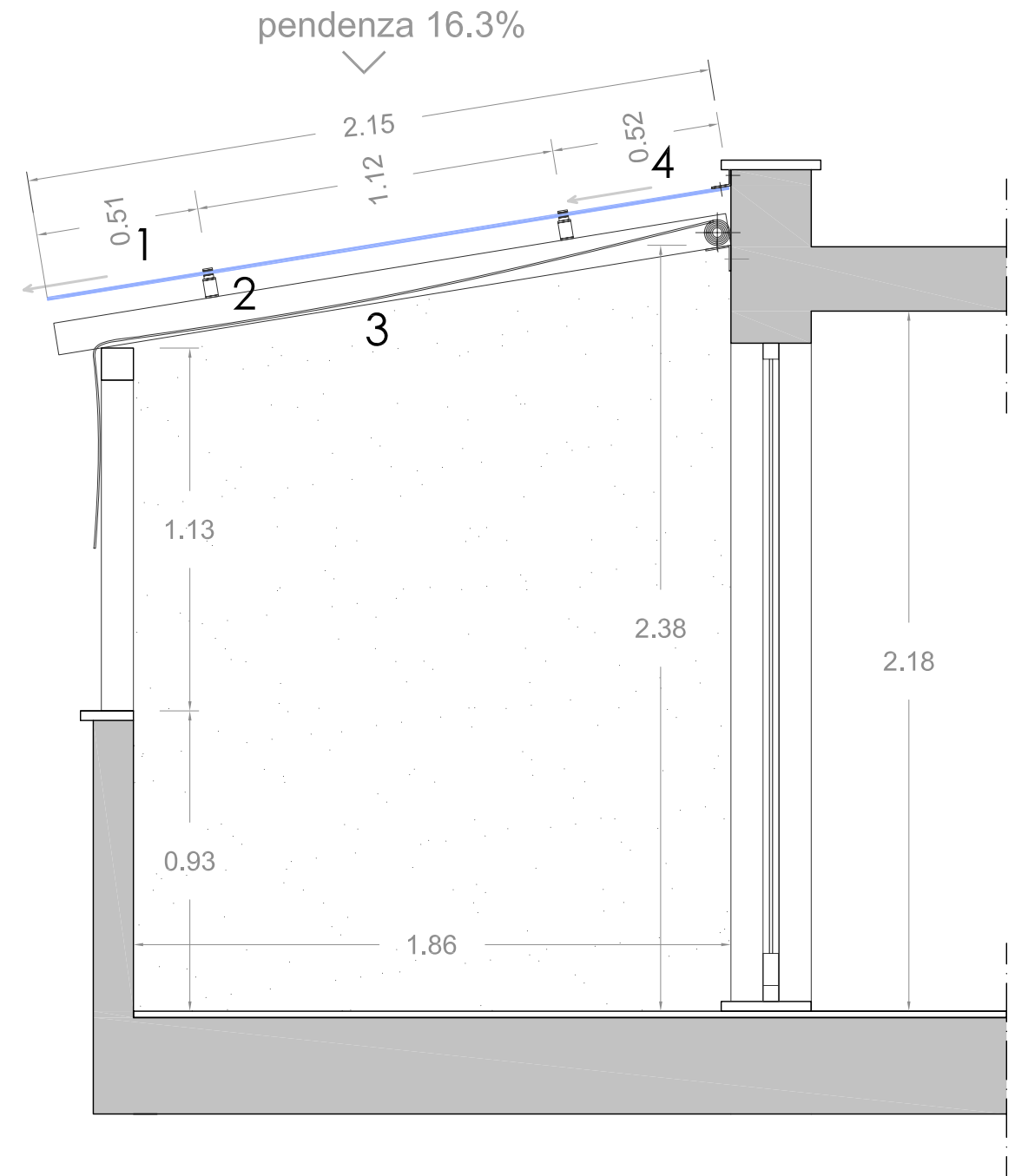
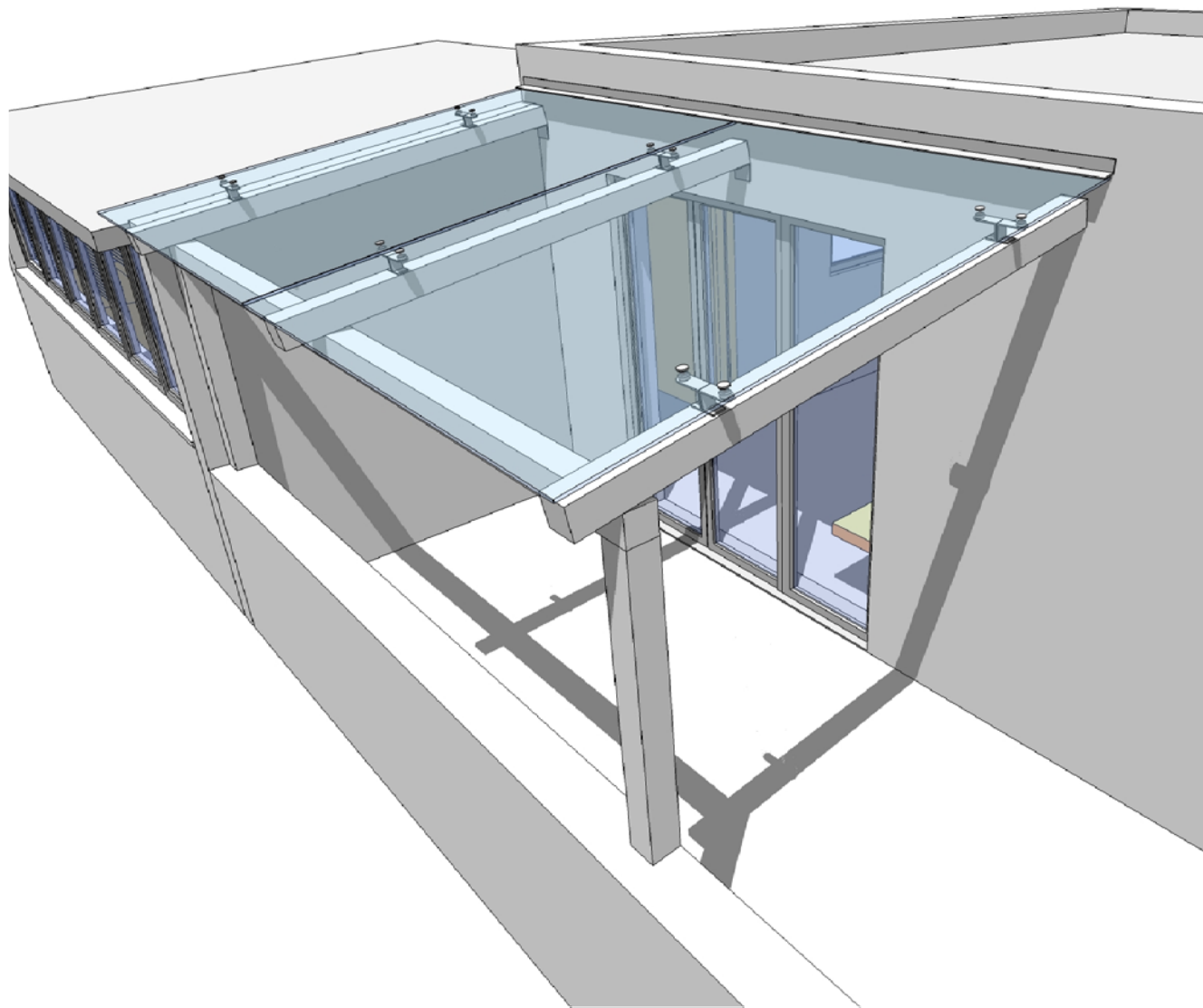
## SEZIONE - PARTICOLARE COPERTURA

### LEGENDA

- 1 - Plexiglass sp. 10mm dim. 215x175
- 2 - Piedini in acciaio
- 3 - Briseleil in canne di bamboo
- 4 - Flusso acqua

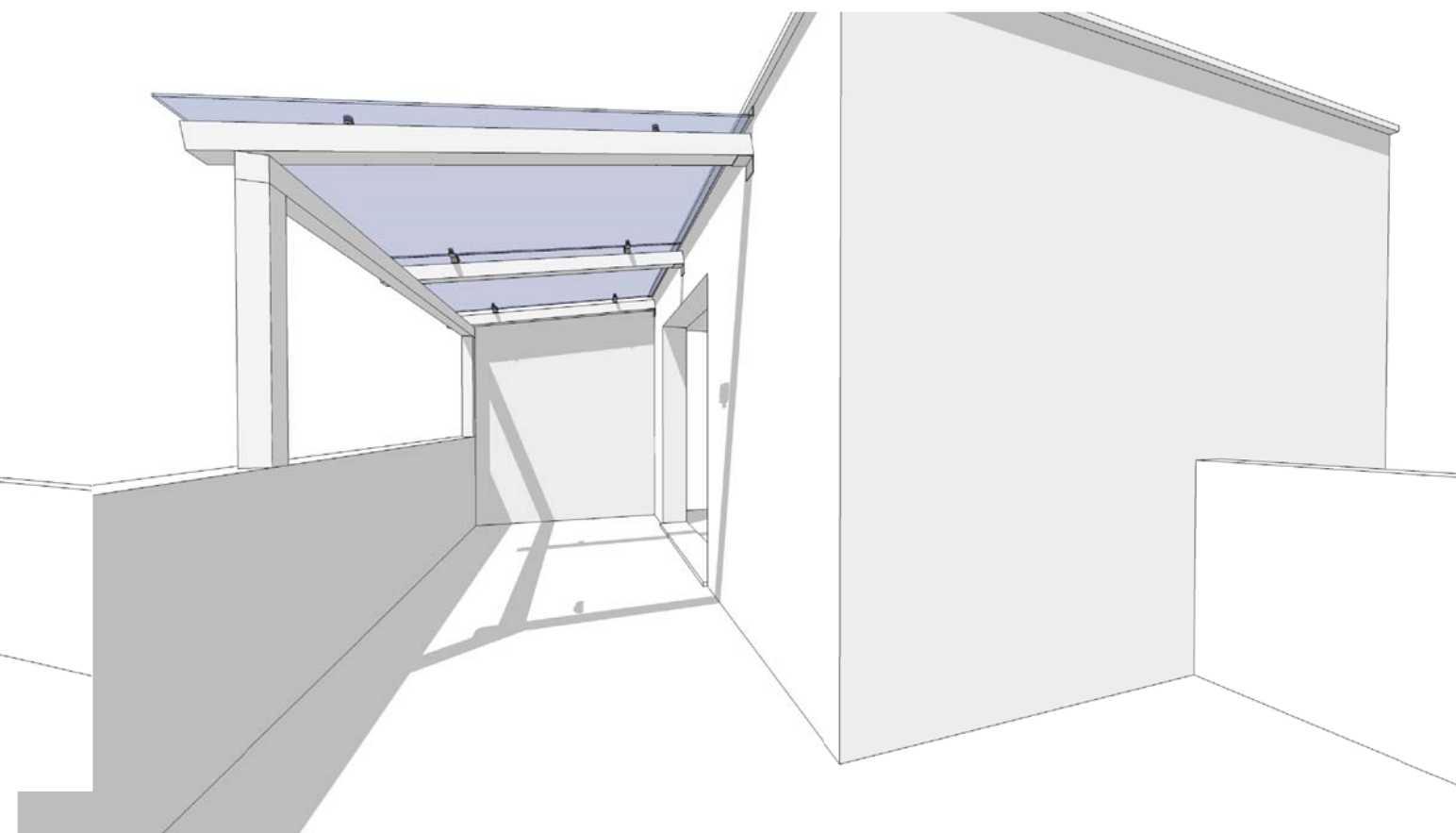
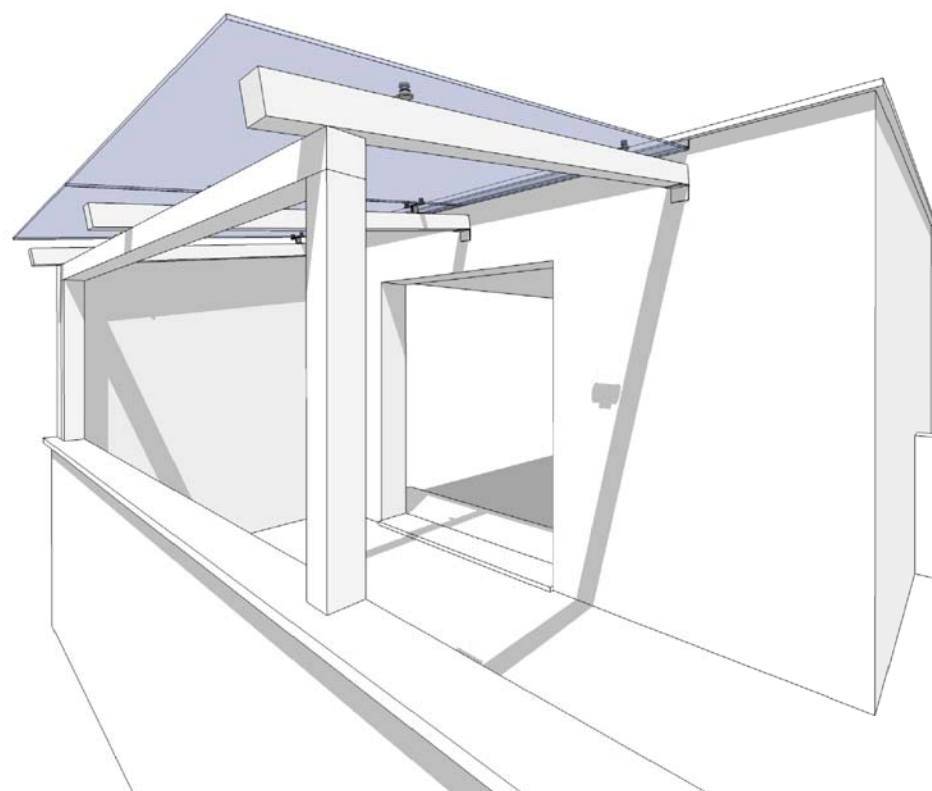
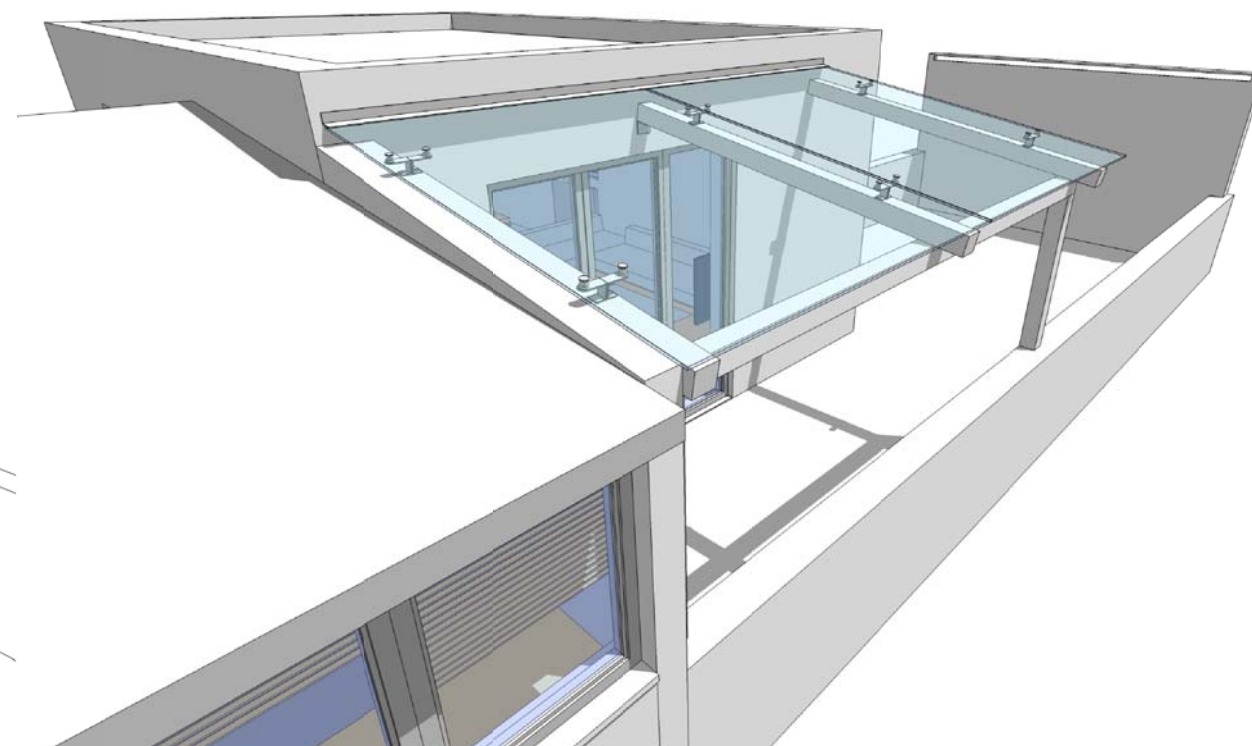
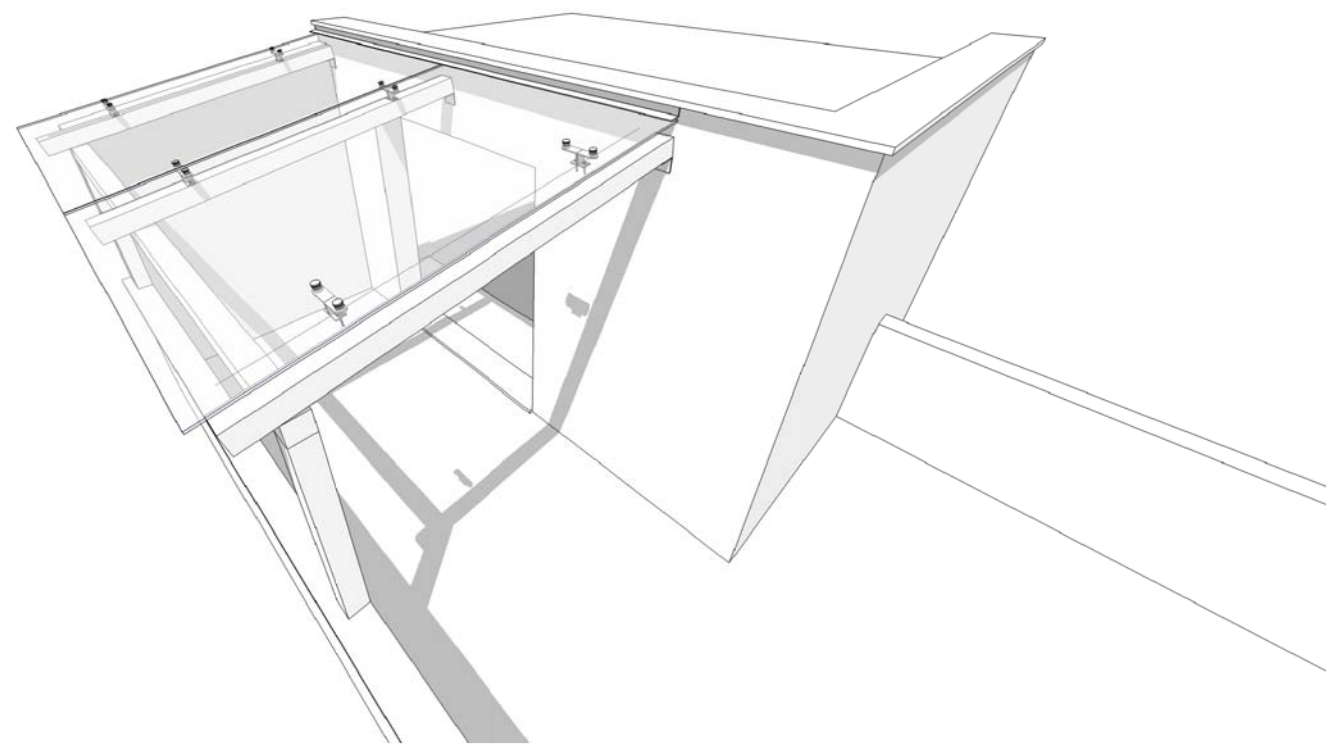
### COSTI

- 1 - 2x Plexiglass sp.10mm dim. 215x175 = 1100 euro
- 2 - 6x Piedini in ferro verniciati grigio metal. = 100 euro
- Totale = 1200 euro



SEZIONE - PARTICOLARE COPERTURA

# TAV A.1.2 - PROGETTO A



SCALA 1:20